

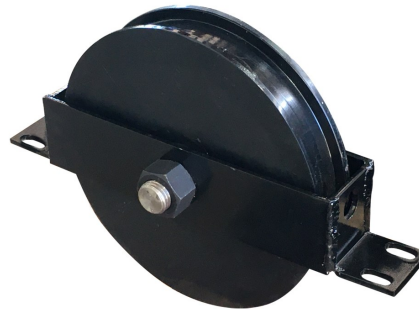
CASTERS and assemblies



Well Built Industries USA, LLC manufactures the highest quality bottom rolling door caster on the market today, using tapered roller bearings and machining our wheels to tolerances higher than our competition. Our easy to install system makes replacing worn-out casters a breeze. In addition to that we machine our axles with our precision state of the art CNC mills to insure fit and function. Lastly, our hangar door casters are made with material from the USA assuring our steel meets or exceeds the strength and hardness required for long wear life. Each double flanged caster is shot blasted to remove scale and prepare the surface for a long-life polyurethane finish.

STANDARD CASTER ASSEMBLY

Our standard caster assembly is designed so the caster wheel can be removed without having to take the entire assembly apart.



STANDARD CASTER ASSEMBLY SPECIFICATIONS

SKU	DIAMETER	THREAD WIDTH	RAIL SIZE	WEIGHT (LBS)
MPAVG06	6" V Groove	90°	1/2" Angle	11
MPACA06	6" Flanged	2 1/8"	40#	11
MPACA09	9"	1 13/16"	30#	59
MPACA1201	12"	1 13/16"	30#	96
MPACA15	15"	1 13/16"	30#	150
MPACA1801	18"	2"	40#	244
MPACA2401	24"	2.5"	60#	509



HANGARDOORPARTS.COM
772-283-8800

CASTERS and assemblies



RETRO WHEEL (RW) CASTER ASSEMBLY

Originally designed by Richard & Wilcox in the 1950's, this caster assembly is adjustable and have a slimmer profile that allows them to be used in narrower panels. When Richard & Wilcox stopped producing these assemblies other companies started to manufacture the adjustable casters.



Well Bilt Industries USA, LLC does not typically use the Retro Wheel caster assembly for our rolling doors. This is because a door should be installed level and plumb, therefore adjustments of the caster assembly should not be necessary. However, this style of caster housing is used throughout the industry which is why we manufacture them.

RW CASTER ASSEMBLY SPECIFICATIONS

SKU	DIAMETER	THREAD WIDTH	RAIL SIZE	WEIGHT (LBS)
MPARWCA0601	6"	1 7/16"	20#	42
MPARWCA0901	9"	1 7/16"	20#	70
MPARWCA1201	12"	1 7/16"	20#	120
MPARWCA1501	15"	1 7/16"	20#	150
MPARWCA1801	18"	2"	40#	285

Engineered for durability and reliability, our casters are crafted to withstand the demanding environments of hangar operations. Constructed from high-quality materials, including robust steel, precision tapered bearings and wet bolt thru-axle, our caster assembly ensures long-lasting performance and dependable functionality. Whether you're maneuvering large hangar doors for aircraft or industrial equipment, our caster assembly delivers exceptional stability and maneuverability.



HANGARDOORPARTS.COM
772-283-8800